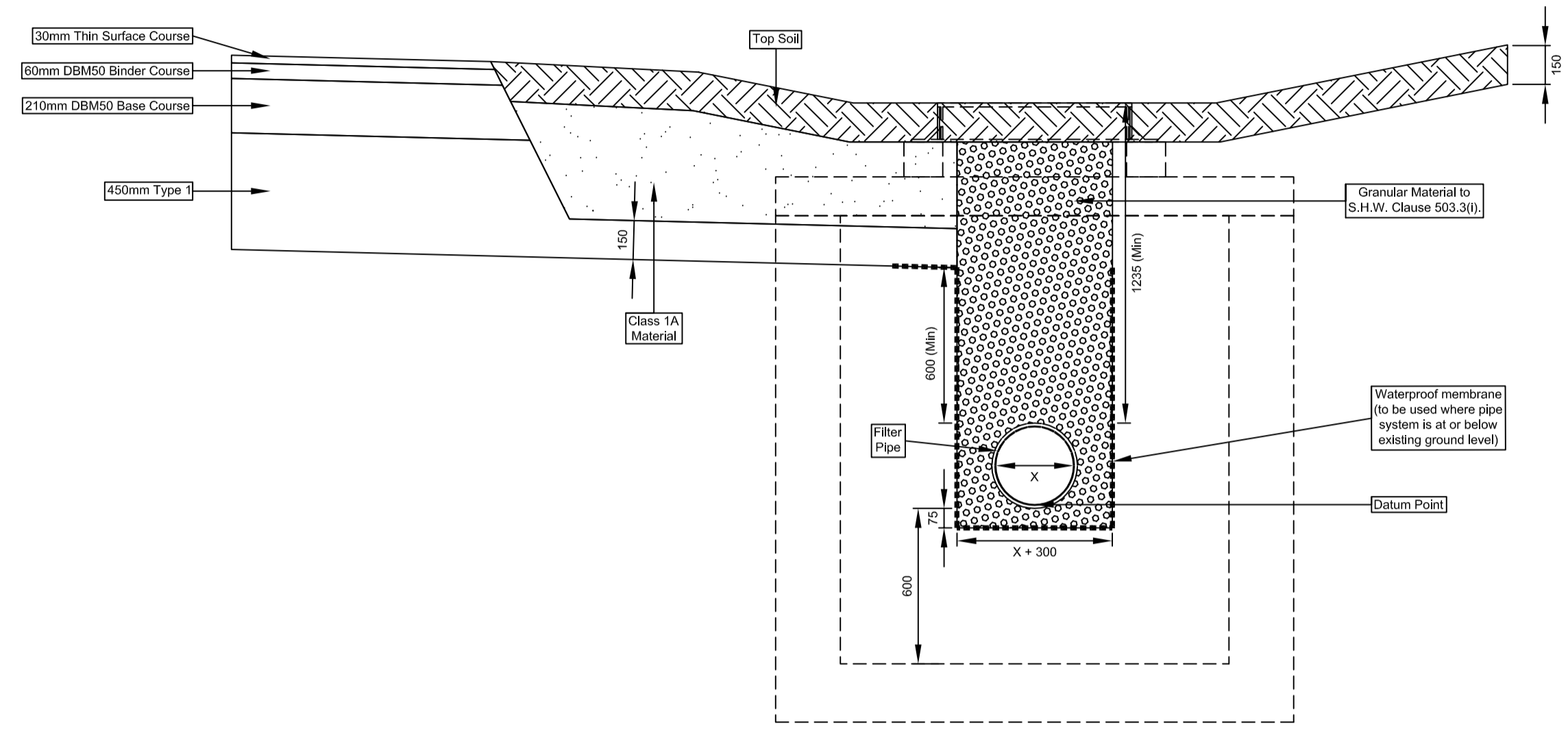
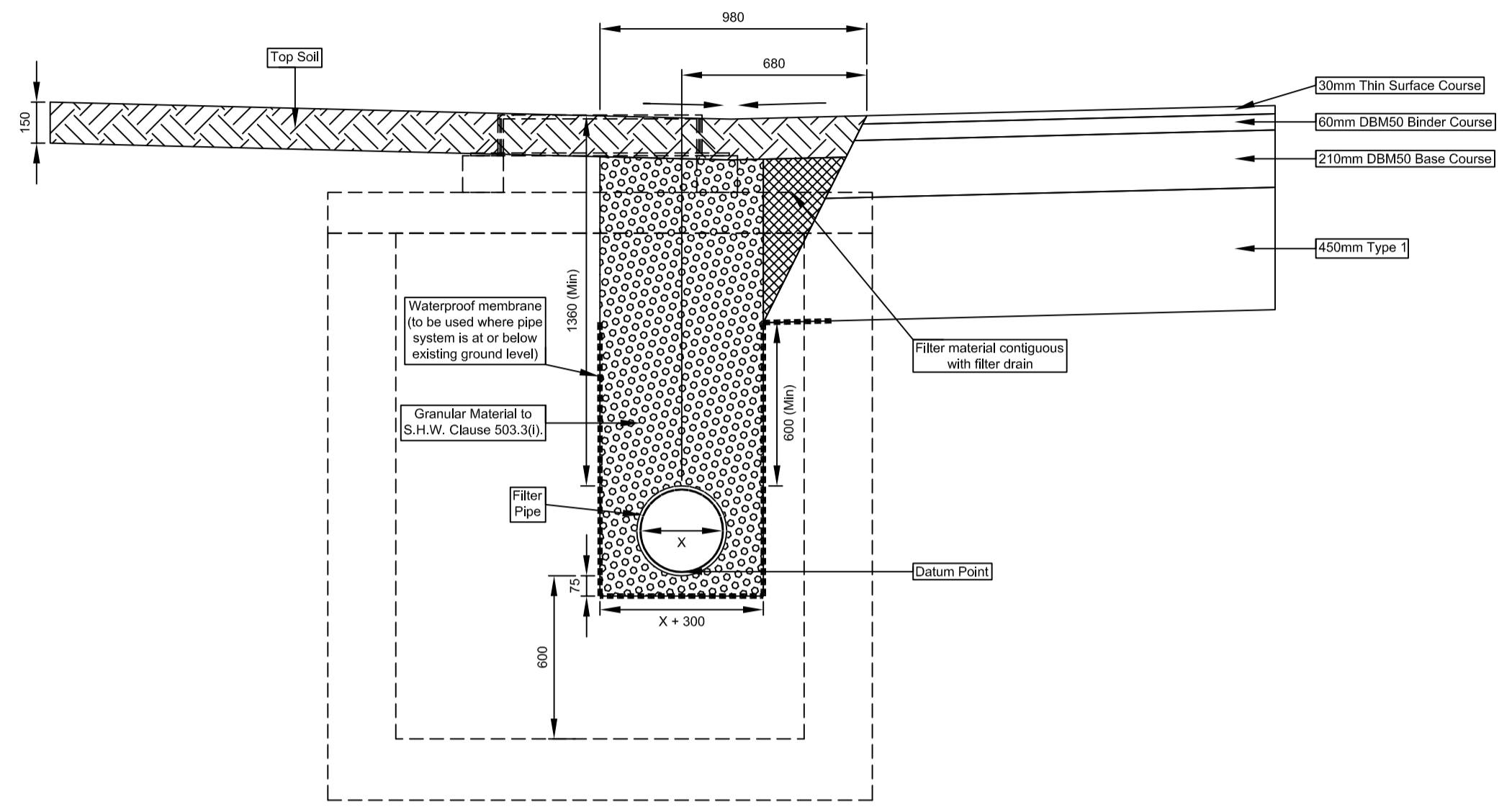


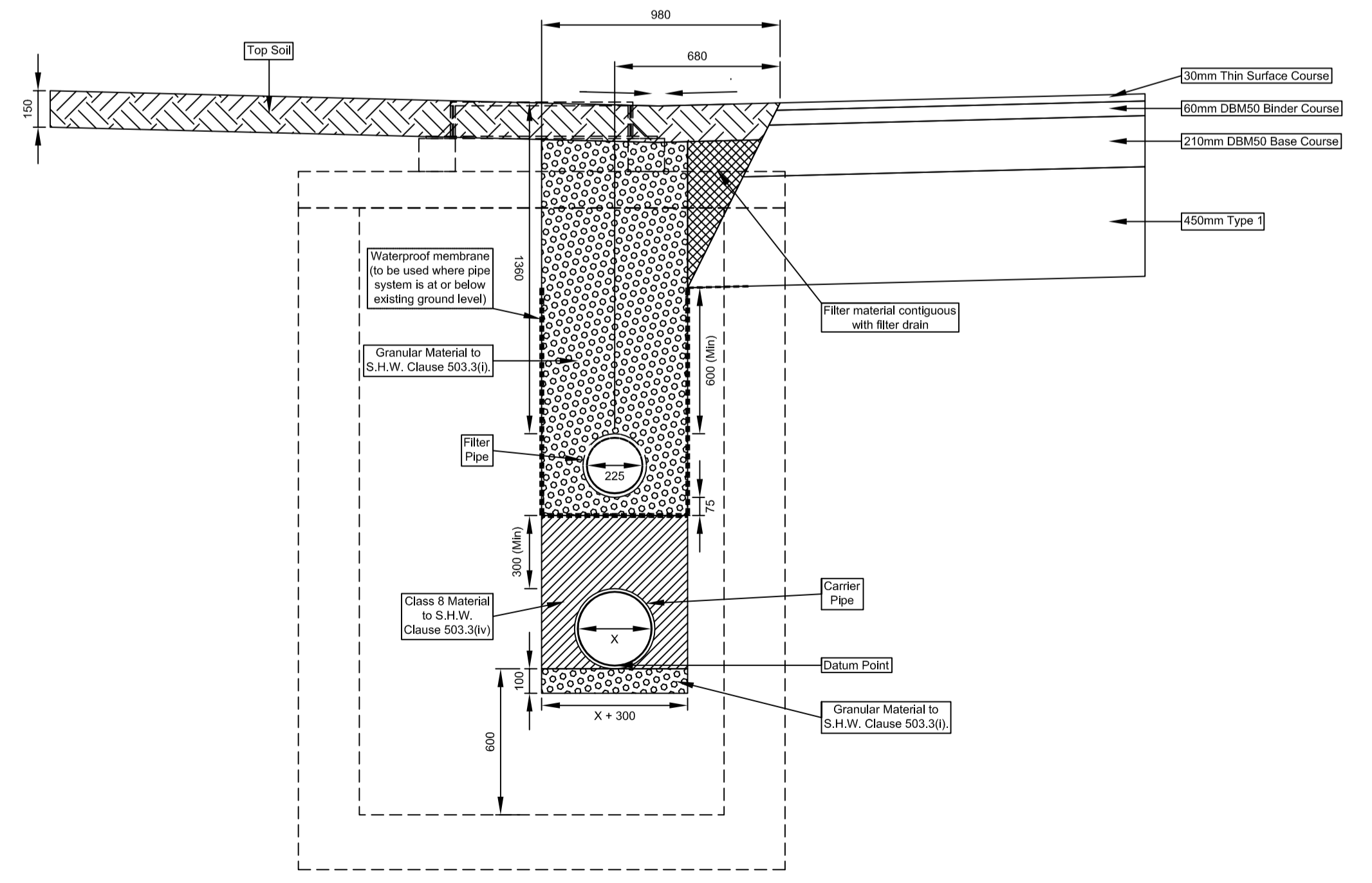
Detail A
 Combined Surface and Ground Water Drainage System in Grassed Channel



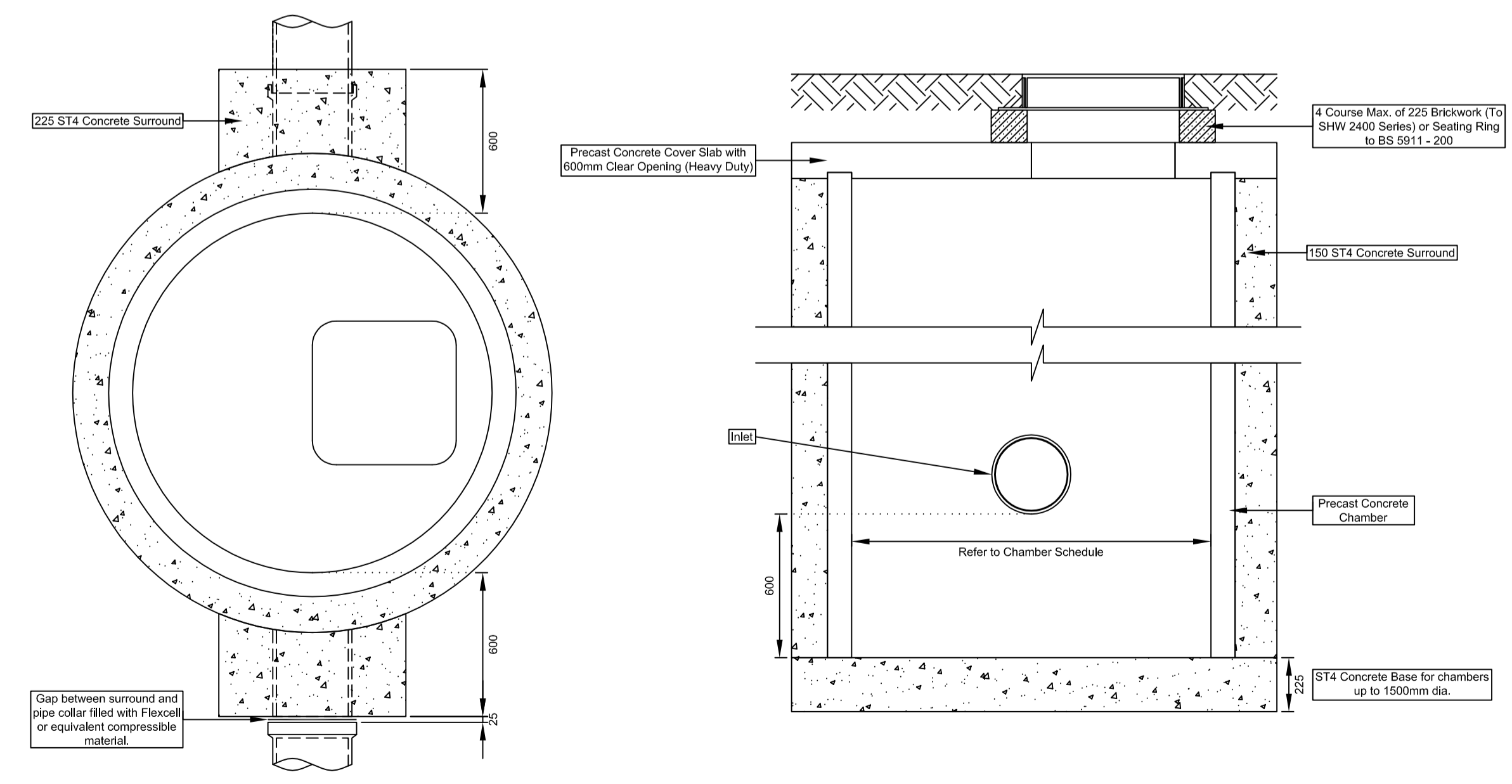
Detail B
 Combined Surface and Ground Water Drainage System in Verge



Detail C
 Combined Surface and Ground Water Drainage System in Verge with Carrier Pipe



Detail D
 Precast concrete Circular Catchpit Chambers - Maximum Depth from Ground to Soffit 3.05m



- NOTES**
- Drainage Pipe System Notes (Details A, B and C)
- All dimensions in millimetres.
 - 'X' represents the nominal diameter of the largest pipe connected to the chamber.
 - All pipes shall be laid to the levels shown in the Pipe Schedule in Appendix 5/1.
- Chamber Detail Notes (Detail D)
- All dimensions are in millimetres.
 - Where the roof slab needs to be at greater depth resulting in a brickwork shaft, then the opening in the slab shall be 675 dia. and the shaft of 225 Engineering brickwork carried up to the top shall be 675 x 675 with the top to courses corbelled in to give adequate bearing to the chamber cover.
 - Chamber walls and cover slab to be constructed in precast concrete to BS 5911.
 - For invert levels and connections see Chamber Schedule in Appendix 5/1.
 - Chambers (manholes, shafts and soakaways etc) greater than 1500mm internal diameter and located within the Highway Boundary will require Technical Approval by the adopting parties. The design and detailing shall be in accordance with the Approval in Principle (AIP) submitted to the Technical Approval Authority (TAA) for each chamber. The use of precast products to BS 5911 will not necessarily be accepted. Type approval may be available for some precast supplier's products with further details of these from the TAA.

R0	05/11/2012	ISSUED FOR REVIEW	ARWS	MS	GW	GW
Rev	Rev. Date	Purpose of revision	Drawn	Checked	Rev'd	Apprv'd

JACOBS
 Simpson House, 8 Cherry Orchard Road, Croydon, Surrey, CR9 6BE
 Tel: +44(0)208 666 8212 Fax: +44(0) 208 681 2499
 www.jacobs.com

Client: **HOCHTIEF** (UK CONSTRUCTION) **TAYLOR WOODROW** (Employer) **East Sussex County Council** (Employer)

Project: **BEXHILL TO HASTINGS LINK ROAD**

Drawing title: **HIGHWAY DRAINAGE CONSTRUCTION DETAILS A - D**

Drawing status: **ISSUED FOR REVIEW**

Scale: **1:20 @ A1** **DO NOT SCALE**

Jacobs No. **B1297000**

Drawing number: **B1297001/0500.01a/0016** Rev: **R0**

This drawing is not to be used in whole or part other than for the intended purpose and project as defined on this drawing. Refer to the contract for full terms and conditions.